

# Building a Bridge to a Brighter Future

## The Blessed Sacrament 2025 Capital Campaign



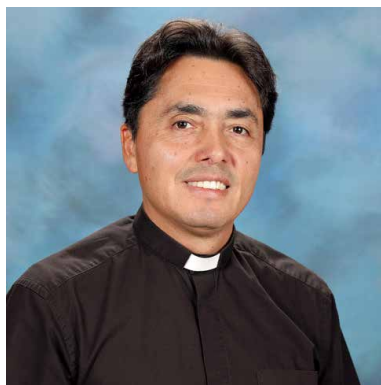
BLESSED SACRAMENT  
CHURCH











Dear Blessed Sacrament Family,

As we look to the future of our beloved parish and school, we find ourselves filled with excitement and hope. We are writing to you today as partners in the faith, united in our mission to strengthen our community and provide the very best spaces for fellowship, ministry, and spiritual growth. We are pleased to announce the launch of our 2025 capital campaign—Building a Bridge to Our Future, with an ambitious goal to raise \$12 million dollars over the next 3 years.



This campaign is more than just an initiative to build physical structures—it is a vision for a future that connects our rich history with the bright potential of the Blessed Sacrament family. We are excited to embark on this journey to create a state-of-the-art Parish Life Center, a central hub where all of us—parishioners, school families, and members of the West Ashley community—can gather, connect, and grow in faith together.

Blessed Sacrament is a vibrant, expanding community that thrives on connection, fellowship, and service. As our parish and school grow, so do the needs of our community. We are constantly looking for ways to provide better spaces for our parishioners and students to come together, support one another, and deepen our faith. Right now, we face challenges in offering enough room to host the ministries and events that are vital to our shared mission.

That's why we are so excited to share with you our plans for the Parish Life Center—a place that will meet these needs and much more. This will be the heart of our campus, providing a welcoming, versatile space for everything from sports events and dinners to prayer services and community gatherings. With your support, we can make this vision a reality and create a space that will serve as a hub of life, faith, and connection for generations to come.

The Building a Bridge to Our Future campaign is not just about building structures, it's about creating spaces where people can come together, where relationships are strengthened, and where our mission can continue to grow. This is an investment in the future of our community and the legacy of Blessed Sacrament. Your support is essential in making this vision a reality.

Together, we can ensure that Blessed Sacrament remains a beacon of hope, faith, and unity in our community for generations to come. We invite you to join us in this historic effort to strengthen and expand the heart of our parish and school. With your generosity and prayerful support, we will build a space where all are welcome, where faith is deepened, and where community thrives.

We are grateful for your continued commitment to Blessed Sacrament and look forward to building this future with you.

In Christ's service,

Fr. Arnulfo Jara (A.J.) Gálvez  
Parish Priest, Blessed Sacrament Catholic Church

Corinne King  
Principal, Blessed Sacrament School

## A VISION LONG IN THE MAKING – NOW READY FOR ACTION

The **Building a Bridge to Our Future** campaign is the key to unlocking the next chapter of Blessed Sacrament's legacy. For generations, our community has envisioned a vibrant, unified space that reflects the strength and growth of our parish life. Now, we are ready to build that bridge — from our cherished history to an exciting and inclusive future. Through this capital campaign, we will create a **Parish Life Center** that will support, enhance, and foster the ever-expanding ministries and connections within our community.







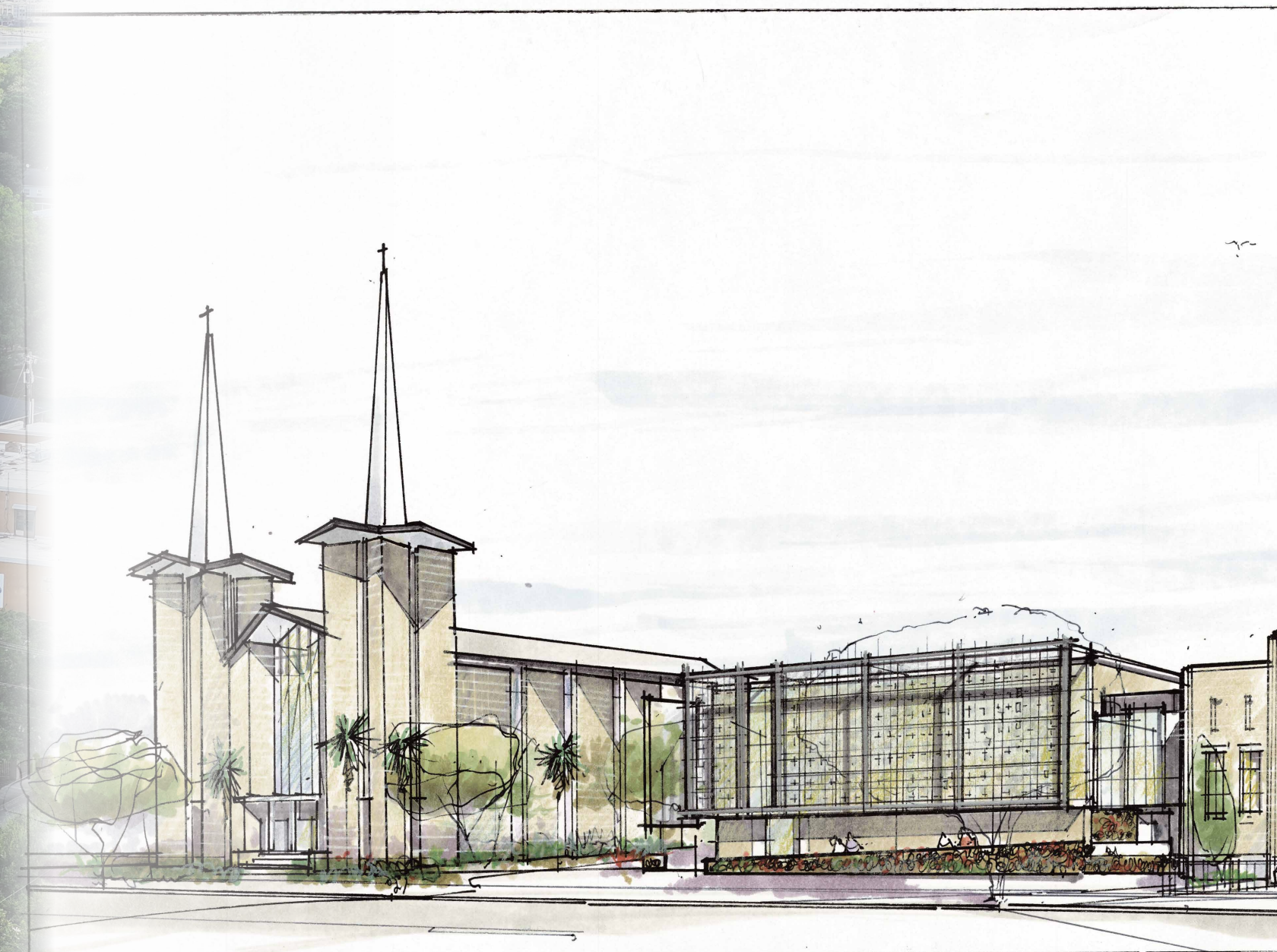


## TODAY'S BLESSED SACRAMENT

### A Growing and Thriving Community

At Blessed Sacrament, we are blessed with a **dynamic, expanding parish** that thrives on connection, fellowship, and spiritual growth. But as we continue to grow, we face growing pains — **space limitations** and a lack of places to gather, celebrate, and engage. Whether it's families, school members, or those beyond our parish in the greater West Ashley area, the demand for **community-oriented spaces** has never been greater. As our community faces complex challenges in social, economic, and political realms, the **need for unity, service, and shared support** is more urgent than ever.





## ***TOMORROW'S BLESSED SACRAMENT***

### **The Vision for a New Parish Life Center**

The new **Blessed Sacrament Parish Life Center** will be a **transformational hub** for our community, supporting both our parish and school while fostering connection and outreach. This state-of-the-art space will cater to the full spectrum of our needs, offering a central location for events, services, and social gatherings that bring people together. Envision dinners, receptions, and banquets; athletic events and school activities; prayer services, performances, and community events.

Imagine:

- **Dinners, receptions, and banquets**
- **Athletic events and school activities**
- **Prayer services, performances, and community events**

The **Parish Life Center** will be a dynamic, multi-functional space, a place for all to gather, celebrate, and connect — a place that will infuse our campus with life and energy.

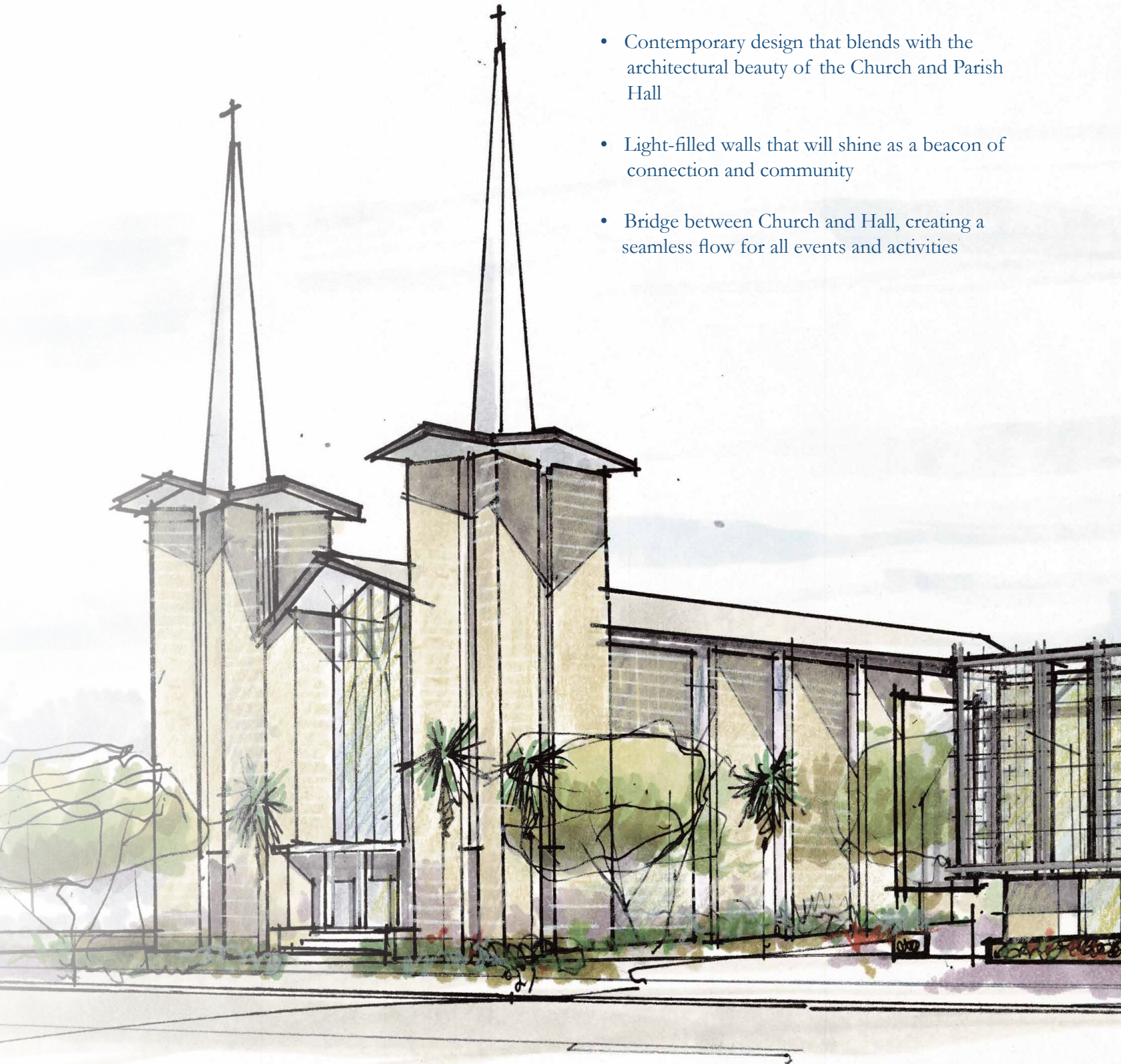


## Exterior Design Overview: A Beacon of Light for West Ashley

The design combines modern and timeless elements, seamlessly connecting the Church, Parish Hall, and new Parish Life Center, creating a cohesive, inspiring campus. The exterior will radiate warmth, inviting people in for fellowship and service. When events are happening, the building will glow with activity, showcasing the life within.

### Features include:

- Contemporary design that blends with the architectural beauty of the Church and Parish Hall
- Light-filled walls that will shine as a beacon of connection and community
- Bridge between Church and Hall, creating a seamless flow for all events and activities





*Picture this: Savannah Highway, now glowing brightly as  
a beacon of hope, welcoming all to Blessed Sacrament.*







## Multipurpose Room: A Space for All Activities

This 8,000 SF room will be ready to accommodate:

- Full-size basketball court with bleacher seating for 350 people
- Dinners and receptions for up to 224 guests seated at tables
- A 700 SF stage for performances, meetings, and community events



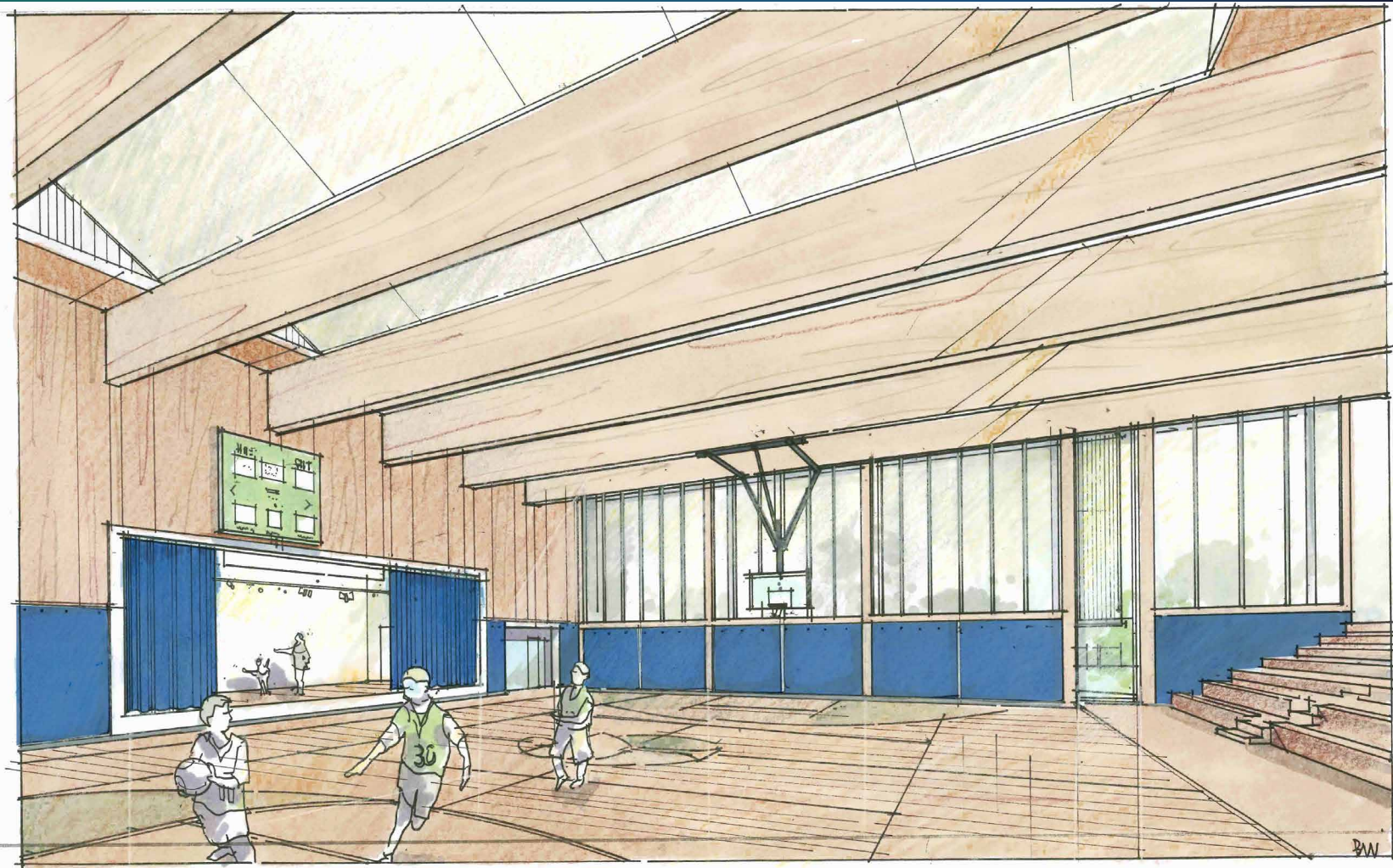
### Additional Features:

- Concession/serving areas
- Storage for athletic equipment and event supplies
- Restrooms and changing rooms for athletes
- Direct access to the kitchen and expanded Parish Hall for events

***The heart of the new Parish Life Center will be the Multipurpose Room — a flexible, expansive space designed for athletic events, meetings, community gatherings, and so much more.***







## IMAGINE:

- **Friday night basketball games** with fans from multiple generations cheering together
- **Saturday night performances** from the BSCS drama program or local artists
- **Family-friendly events** like Fish Fries, Pancake Breakfasts, and movie nights for all ages







## Renovated and Expanded Parish Hall: A New Heart for Fellowship

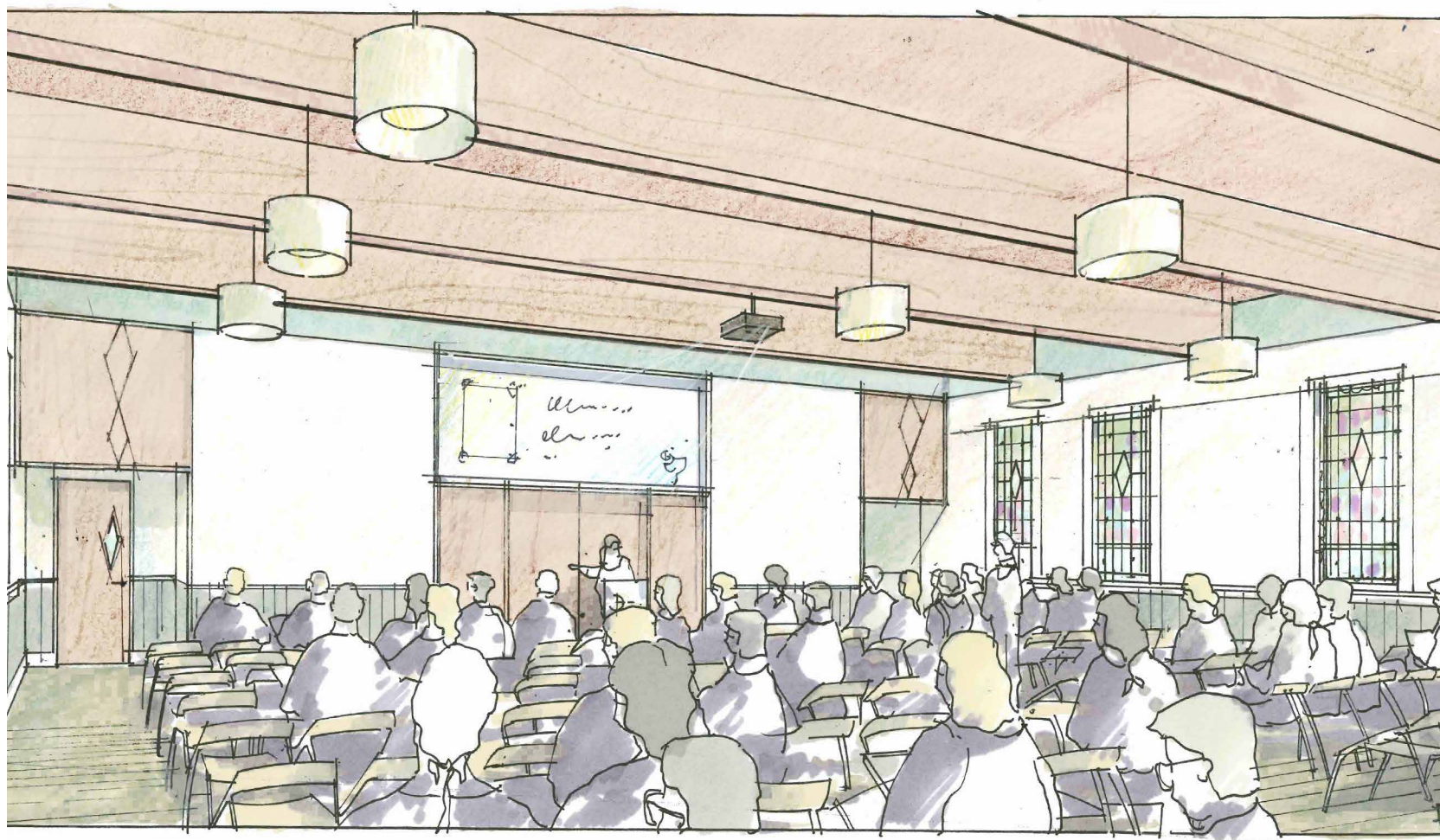
The newly renovated Parish Hall will include:

- **Two-story addition** with a new kitchen and storage
- **Expanded foyer** with easy access to the Parish Life Center
- A **665 SF commercial kitchen**, serving the needs of both the Hall and Multipurpose Room
- Restored stained glass windows that will preserve the Hall's rich history

*The original Parish Hall will be reimagined and expanded to serve as the heart of our community life. No longer will we have to compete for space; this renovated space will seamlessly serve the growing needs of our ministries.*







## IMAGINE:

- Baptisms, prayer services, and meetings taking place in a vibrant, modernized space
- An expanded **commercial kitchen** for larger community meals and events
- **Dedicated offices and storage** to support our growing needs





## New Church Office Wing: Supporting Ministry Behind the Scenes

The new **office wing** will offer a professional, accessible space for staff, ministry leaders, and parishioners to meet and plan. This area will include:

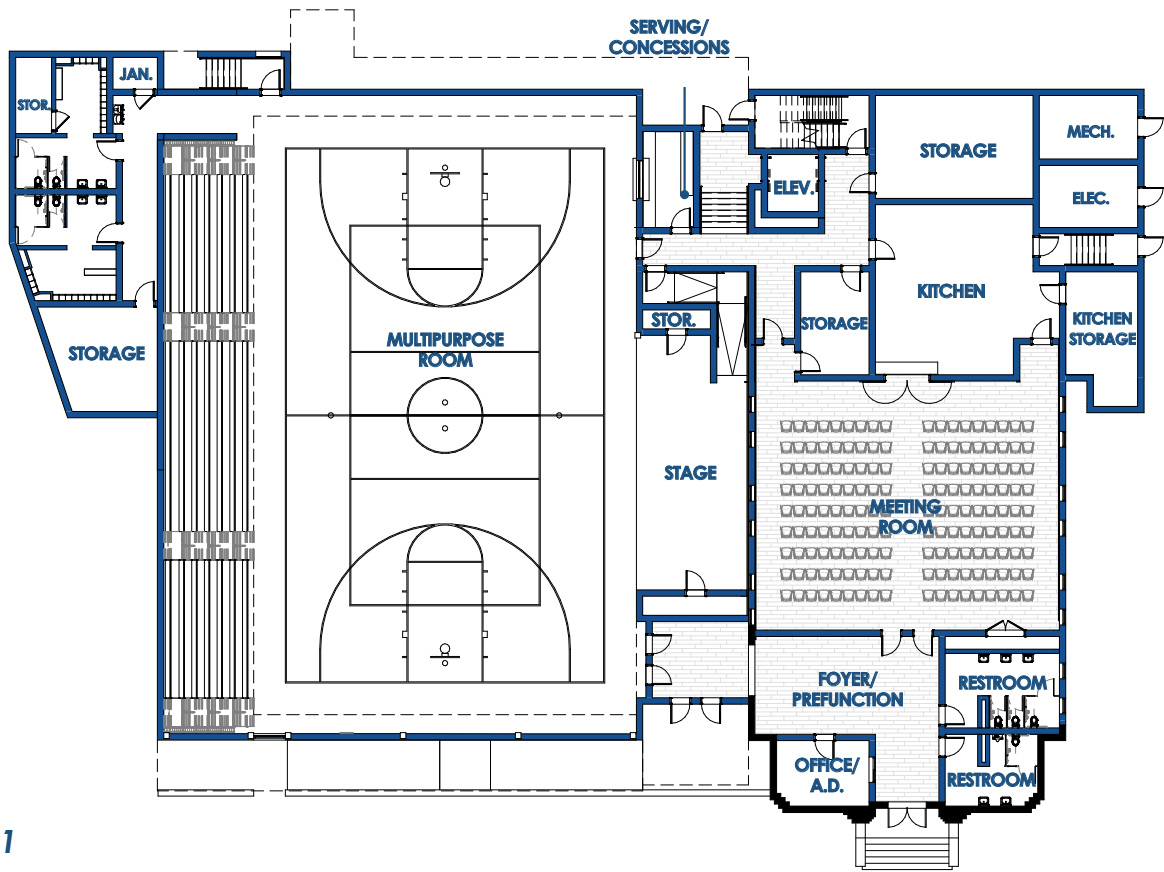
- **Conference rooms** for small group meetings, Bible studies, and events
- **Private offices** for staff, ensuring they can work efficiently while still being part of the campus life

*The new office wing will offer a professional, accessible space for staff, ministry leaders, and parishioners to meet and plan.*

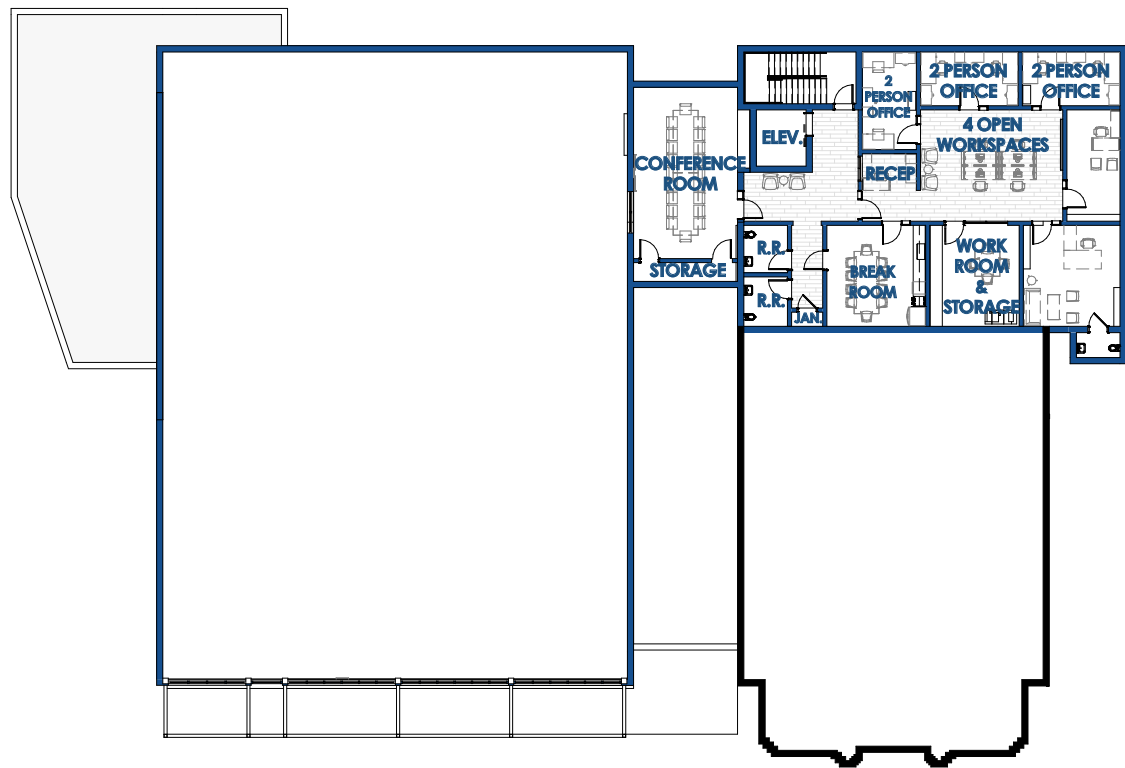




# Floor Plans



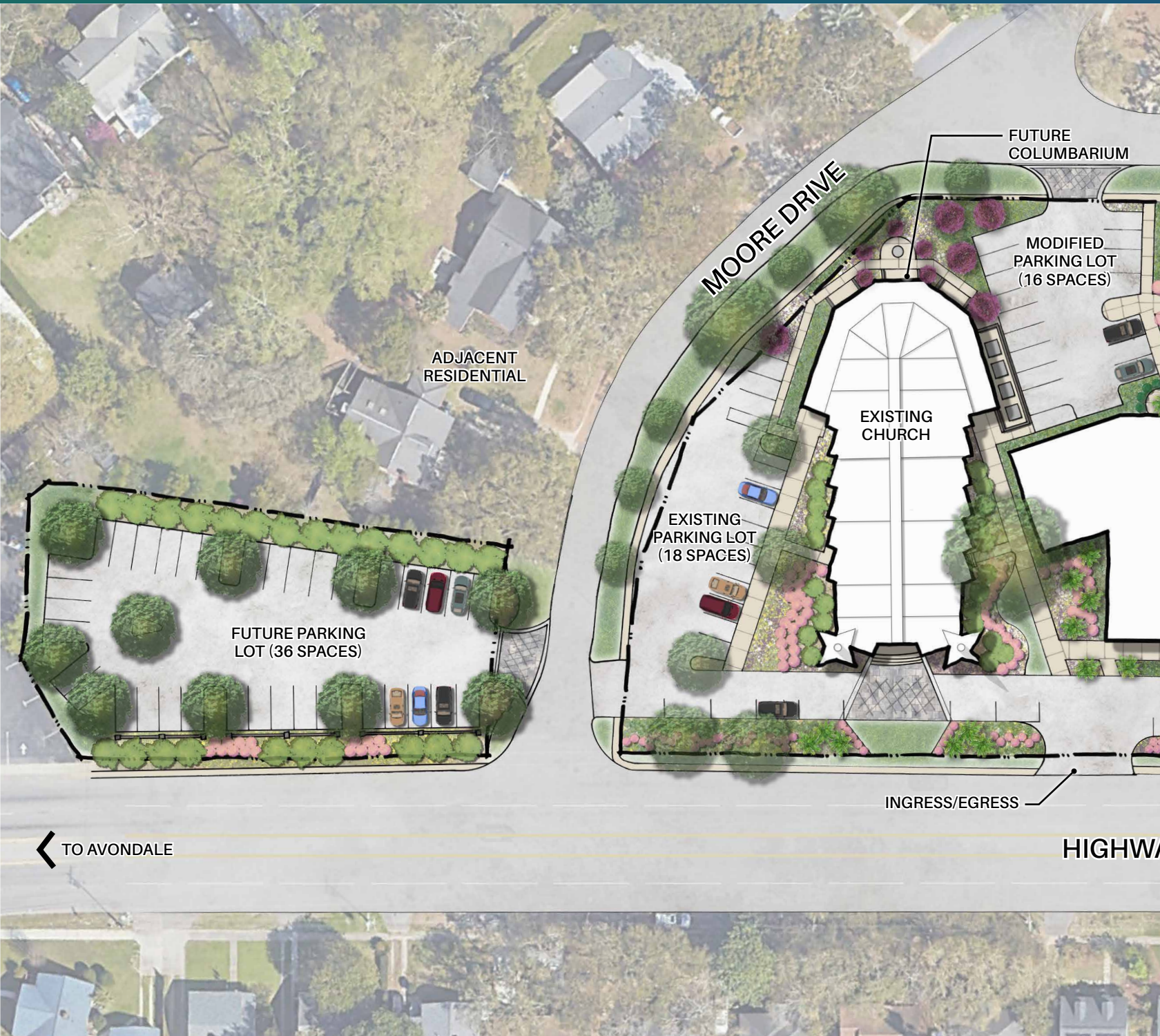
Level 1



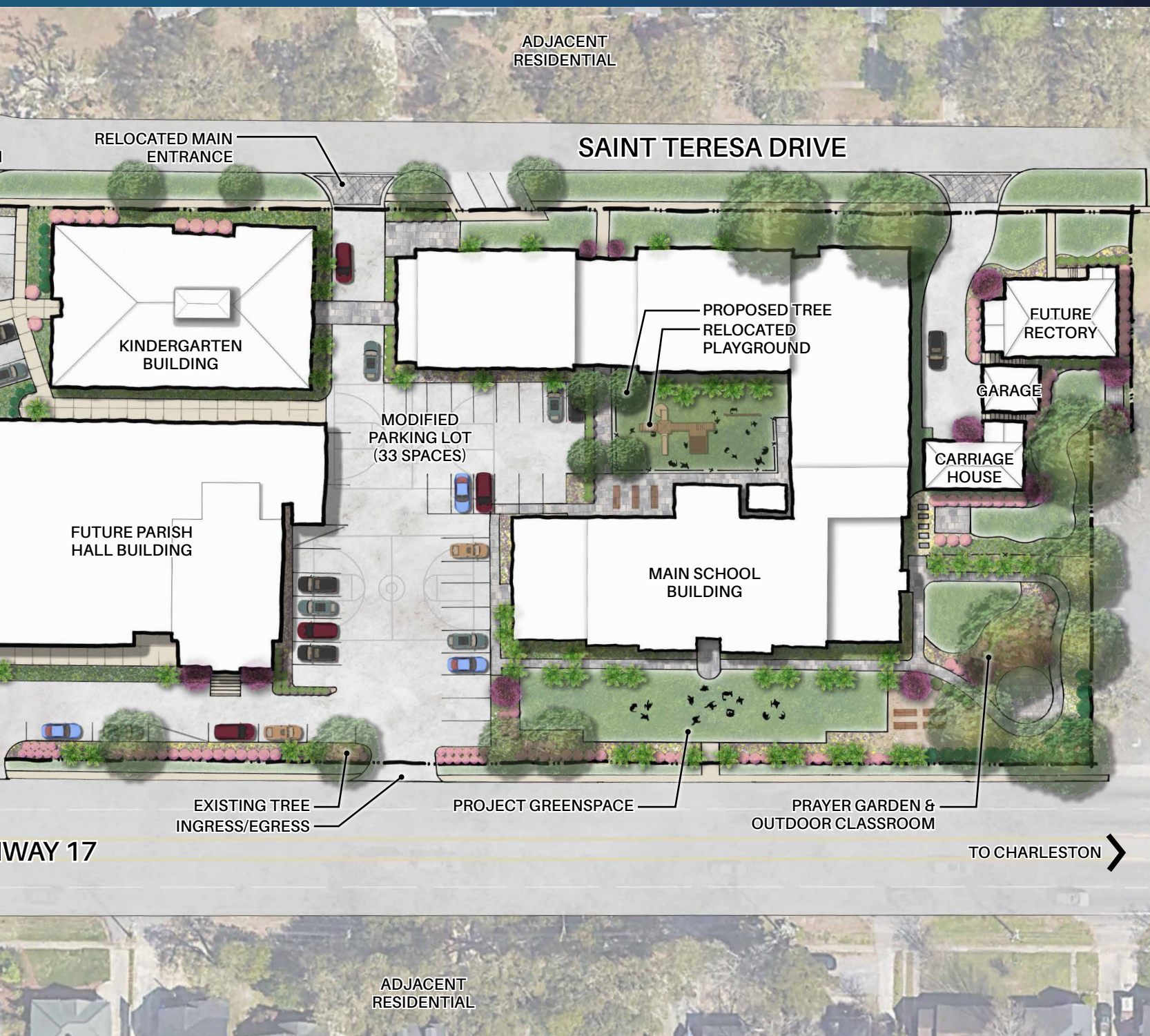
Level 2



# The Master Plan for Our Campus: A Unified Vision for Growth







The **Building a Bridge to Our Future** plan is rooted in our **1999 vision** for the campus. The addition of a new parking lot and the city's Avondale Realignment project will create convenient, ample parking for all visitors. Additionally, the new Rectory at 9 St. Teresa Drive will provide a comfortable, inspiring space for our pastors to serve the community, complete with an oratory and private garden for personal reflection.





## PLC NAMING OPPORTUNITIES

Gym Floor	\$1,000,000
Commercial Kitchen	\$500,000
Parish Hall Lobby	\$500,000
Stage	\$250,000
Parish Office Conference Room	\$250,000
Scoreboard	\$100,000
Locker Rooms	\$100,000
Parish Offices Kitchen	\$75,000
Pastor Office (1)	\$75,000
Pastor Office (2)	\$75,000
Athletic Director Office (Lobby)	\$50,000
Parish Office (1)	\$50,000
Parish Office (2)	\$50,000
Parish Office (3)	\$50,000
<b>Total:</b>	<b>\$3,125,000</b>

Plaque for \$25,000 Donors

For those interested in gifts of 2M+ and/or additional naming opportunities, please contact Corinne King.

## CAPITAL CAMPAIGN

If every family pledges 3% of their annual income our parish and school will be able to reach our goal of \$12 Million Dollars.

The total is payable over a three year period.

Annual Income	3% Total Pledge	36 Monthly Payments
\$150,000	\$4,500	\$125
\$100,000	\$3,000	\$83.33
\$75,000	\$2,250	\$62
\$50,000	\$1,500	\$41.66
\$25,000	\$750	\$20.83
\$10,000	\$300	\$8.33
\$5,000	\$150	\$4.16

**Please pray for the campaign**

For more information scan the QR code or visit: [scbss.org/giving/parishlifecenter.dm](https://scbss.org/giving/parishlifecenter.dm)







## Your Support Makes This Vision Possible

The **Building a Bridge to Our Future** campaign is about creating a thriving, welcoming community for generations to come. With your support, we can bring this vision to life — transforming Blessed Sacrament into a **vibrant hub** of spiritual growth, fellowship, and service.

Together, we will bridge our cherished past with a future full of hope and opportunity.

Join us in building the future of Blessed Sacrament. Together, we can achieve great things!



## **Blessed Sacrament Leadership**

Rev. Arnulfo Jara-Galvez, Pastor

Corinne M. King, Principal

## **Parish Finance Council**

Danny Condon

Tony Daniel

Walter Frick

Michael Haynes

Anna Rossman

Belen Vitello

## **School Advisory Council**

Greg Buehner

Stephen DeAntonio

Myra Haynes

Frank Kerr

Laurie Holscher

Trey Linton

Kathy Rice

Randy Teegardin

Abbie Von Dollen

## **Building Committee**

Daniel Beck

Trey Linton

Joseph Pinto

Belen Vitello

## **Capital Campaign Committee**

Katie Arthurs

Corrinne Barnes

Erin Bellinder

Sallie Bendt

Rosie Cochran

Kathleen and Michael Ferri

Frank Kerr

Jeff Forte

Walter and Stephanie Frick

Laurie Holscher

Deacon Joe Keating

Lusila Morales

Gigi and Michael Rollins

Jeanne Sheffield

Krystal Cau